

# Ceramite® Trowellable

Superior Performance in Wear Resistant Applications

Bulletin 0119

Cement Industry

04/03



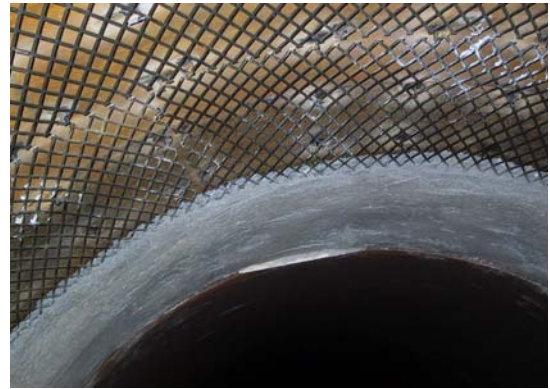
Cooler Exhaust Duct



Retaining Anchors & Mesh



Ceramite® Field Mixed & Trowelled



Overhead Application



Completed Ceramite® Lining



Anxiously Awaiting More Ceramite®

## INDUSTRIES SERVED

- |                 |                    |                        |                           |
|-----------------|--------------------|------------------------|---------------------------|
| ☞ Refining      | ☞ Non-Ferrous      | ☞ Zinc                 | ☞ Precast Manufacturing   |
| ☞ Rock Products | ☞ Die-Casting      | ☞ Boiler Manufacturing | ☞ Mineral Processing      |
| ☞ Chemical      | ☞ Power Generation | ☞ Primary Aluminum     | ☞ O.E.M. Furnace Builders |
| ☞ Steel         | ☞ Incineration     | ☞ Secondary Aluminum   | ☞ Cremation               |