

Ceramite® BKR Floor Tile Installations

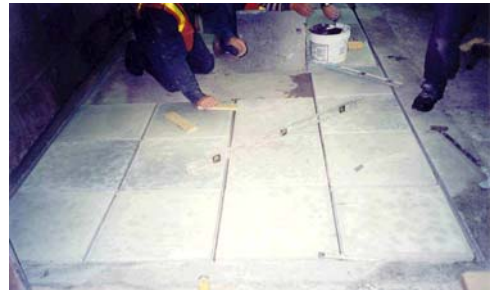
Superior Performance in Wear Resistant Applications

Bulletin 0133

Aluminum Industry

03/04

Installed	Plant	Description
1991	Kubal, Sweden	Cast house
1992	Hydro Al Ardal, Norway	Cast house
Dec. 1993	Alcan Australia	In front of furnace
Summer 1995	Hydro Al Hølmestrand, Norway	In front of furnace
Dec. 1996	Alcan Iceland	In front of furnace
Jan. 2001	Elkem Al Mosjøen, Norway	In front of furnace
Jul. 2002	AMAG Rolling Mill, Austria	In front of furnace
Nov. 2002	Chrysler Canada, Etobicoke, Ontario	In front of furnace
2003	Aluminum Essen, Germany	In front of furnace
Mar. 2003	Dubai, Dubai	In front of furnace
Mar. 2003	Alcan Lynemouth, UK	In front of furnace
Jul. 2003	Alcoa, Cressona	Waiting to be installed
Aug. 2003	AMAG Rolling Mill GMBH	In front of furnace
Nov. 2003	Elkem Al Lista, Norway	Cast house floor
Jan. 2004	Wolfer & Goebel (Diamler Chrysler)	In front of furnace



Floor Tile Summary

- ↻ Ease of installation
- ↻ High strength
- ↻ Eliminate safety issues
- ↻ Eliminate bi-annual floor repairs
- ↻ Thousands of tile performing successfully
- ↻ Five years plus without replacement

INDUSTRIES SERVED

- ↻ Refining
- ↻ Non-Ferrous
- ↻ Zinc
- ↻ Precast Manufacturing
- ↻ Rock Products
- ↻ Die-Casting
- ↻ Boiler Manufacturing
- ↻ Mineral Processing
- ↻ Chemical
- ↻ Power Generation
- ↻ Primary Aluminum
- ↻ O.E.M. Furnace Builders
- ↻ Steel
- ↻ Incineration
- ↻ Secondary Aluminum
- ↻ Cremation