

# Ceramite® Trowellable Cooler Exhaust Duct Application

Superior Performance in Wear Resistant Applications

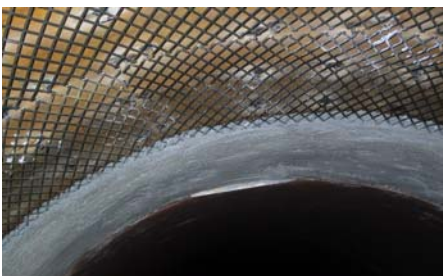
Bulletin 0142

Cement Industries

07/04



Retaining Mesh



Overhead Application



Completed Lining



"Happy Gang"

Ceramite® is a group of advanced castables exhibiting unique properties, such as extreme accuracy of casting, high abrasion wear resistance, mechanical strength, good resistance to high temperature and resistance to thermal shock conditions. Ceramite® is easy to mix, cast and shape in any size and is easy to work with in-situ, using the trowellable formulation.

### Properties & Qualities

- ↪ Ceramite® exhibits ultra-high wear properties and mechanical strength.
- ↪ Ceramite's® high density provides low porosity against chemical attack and gases.
- ↪ Ceramite® increases the operating lifetime of refractory and metallic parts.

### Ceramite® Trowellable

Ceramite® Trowellable can be installed using "V" anchors, anchor/mesh combinations or whatever has been used previously. The quality of anchor and mesh is normally carbon steel. Ceramite® Trowellable qualities have been used to replace hardened steel, fused cast basalt,

rubber liners and ceramic tile. **The key feature of Ceramite® Trowellable is the elimination of any and all joints that are the area first attacked by abrasive conditions**

### Significant Attributes

- ↪ Monolithic surface
- ↪ High abrasion and corrosion resistance
- ↪ Suitable to 1000°C (1832°F)
- ↪ No stainless steel fibre addition required
- ↪ 6 minute mixing time
- ↪ Peanut butter like consistency
- ↪ 2 to 3 hours working time
- ↪ ½" - 1¼" thicknesses are sufficient
- ↪ No special preparation to steel shell required
- ↪ Easily installed overhead
- ↪ **User-friendly with no hygiene issues, simply add water and mix**

### INDUSTRIES SERVED

- |                 |                    |                        |                           |
|-----------------|--------------------|------------------------|---------------------------|
| ↪ Refining      | ↪ Non-Ferrous      | ↪ Zinc                 | ↪ Precast Manufacturing   |
| ↪ Rock Products | ↪ Die-Casting      | ↪ Boiler Manufacturing | ↪ Mineral Processing      |
| ↪ Chemical      | ↪ Power Generation | ↪ Primary Aluminum     | ↪ O.E.M. Furnace Builders |
| ↪ Steel         | ↪ Incineration     | ↪ Secondary Aluminum   | ↪ Cremation               |