

# Ceramite® CSA Engineered Shapes

Superior Performance in Wear Resistant Applications

Bulletin 0161

Rock Products Industry

08/06

Ceramite® is a family of advanced ceramics that incorporate inorganic composite materials & densely packed micro particles. Ceramite® is formulated to yield high abrasive wear resistance, excellent mechanical strength, resistance to high temperature and resistance to thermal shock conditions. Ceramite® cast, hi-fired shapes are designed and produced to your specific application.

**Ceramite® CSA Engineered Shapes** offer a tremendous market opportunity where refractory and steelwork meet and must be designed to co-exist at temperature. The Stellar Canada Inc./Whetstone Technology engineers have years of experience in designing mechanical attachments within refractory shapes to offset expansion differences and avoid mechanical failure due to cracking and/or fatigue.

Ceramite® CSA has been engineered to form a limestone injection tube. The Ceramite® CSA shape is joined with a stainless steel part that is used for attachment. This Ceramite® assembly was installed at a major cement producing plant. The assembly replaces a tube that was manufactured using 310 stainless steel. The completely stainless steel tube oxidizes, distorts, and quickly prohibits the effective injection of limestone. The CSA Engineered Shapes have been in service since January 2006 without oxidation, distortion or erosion.

**SUCCESSFUL!** A reorder has just been shipped to the customer.

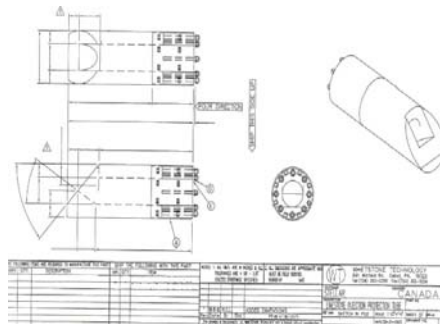
**These design resources along with unique products are available everyday!!**



**Metallic Pipes**



**Limestone Injection Pipe**



**Engineered Design**



**CSA/ Stainless Shape**



**Reorder Piece**

## INDUSTRIES SERVED

- ☞ Refining
- ☞ Rock Products
- ☞ Chemical
- ☞ Steel
- ☞ Non-Ferrous
- ☞ Die-Casting
- ☞ Power Generation
- ☞ Incineration
- ☞ Zinc
- ☞ Boiler Manufacturing
- ☞ Primary Aluminum
- ☞ Secondary Aluminum
- ☞ Precast Manufacturing
- ☞ Mineral Processing
- ☞ O.E.M. Furnace Builders
- ☞ Cremation